



Shelby County Amateur Radio Emergency Services®

WELCOME PACKET

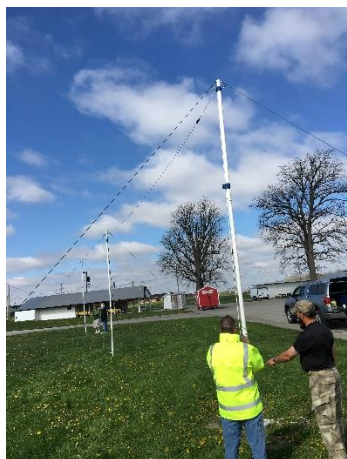
Hello, and welcome to ham radio!

Shelby Co. A.R.E.S.® (Amateur Radio Emergency Services), is an organization comprised of about forty licensed amateur radio operators. The members of this organization volunteer their time and equipment for use during emergency, and non-emergency communications situations.

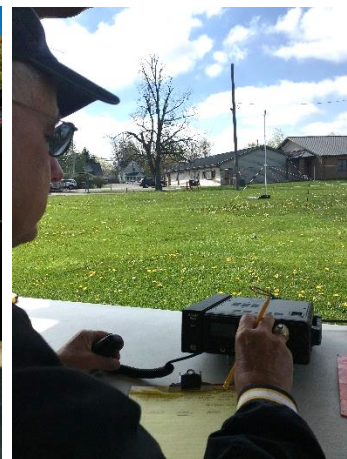
Shelby Co. A.R.E.S., supports agencies such as, Shelby County EMA, American Red Cross, Salvation Army, Shelby Co. Health Department, Shelby County Sheriff, Sidney Police, Shelby County Chamber of Commerce, and any other agency or organization, in Shelby, or surrounding counties, requesting our assistance to provide emergency communications. Our operators are also trained by members of the National Weather Service, to spot and report severe weather, relaying important information via amateur radio, directly to the National Weather Service. The NWS may issue warnings based on our information. This part of the amateur service is known as Skywarn.

Some of our communications include the support to the Sheriff, and police, for missing children and adults. We have manned shelters and supplied communications for flood, and winter storm victims. We are activated during severe weather for Skywarn, and we support the community in providing communications for parades, bike-a-thons, festivals, etc.

Our organization is a 501(c)(3), Non-Profit organization recognized by the Federal Government. We rely on fundraisers and donations to support our needs for radio equipment, and the maintenance of both of our amateur repeaters, and our mobile communications vehicles (SCARES I and II).



Welcome Packet.v9





Shelby County Amateur Radio Emergency Services®

OFFICERS / Contacts

Our organization is a purely volunteer organization. Well, we have to be! We're hams! We have many positions and responsibilities shared by our team. Below are the officers and members with special assignments in our organization.

Shelby County ARES
800 Fair Rd
Sidney, Ohio 45365

Email: scares@woh.rr.com
Phone: 937-421-1254

<https://www.facebook.com/SHELBYCOUNTYA.R.E.S/>
www.shelbycountyohares.com

Member Name	Call Sign	Position	Phone: 937-421-1254 Then press:
Grant Reed	N8KZL	Emergency Coordinator	1
John Probst	KA8RVI	AEC: Operations	2
Nick Sabo	KC8CFI	AEC: Admin/Repeater Programmer	3
Mike Bennett	W8EGL	AEC: Training/Volunteer Examiner	0
Nick Zircher	N4QAD	AEC: Digital Operations/Information Tech	4
Rhonda Wade	KD8RLF	AEC: Net Manager/Hospital-Health Rep.	8
Joe Clark	KC6NLX	AEC: Shelby County Skywarn Coordinator	5
Sherman Owings	KD8FZV	AEC: Emergency Mobile Communications	7
Eric Patterson	K8EEP	AEC: Emergency Mobile Communications	6
Marc Burdiss	AF7RE	Public Information Officer	9



Shelby County Amateur Radio Emergency Services®

EVENTS

Our organization is pretty informal. We welcome any ham to attend/volunteer to help with an event. It doesn't matter what equipment you own, there is always something to do at different events. It is also the best way to introduce yourself to the people of this organization. We attend and help with many events throughout the year. Here is an example of some of the events that we have participated in the past:

- Monthly meetings
- Skywarn Weather Spotter Training
- NWS tornado drills
- Local Emergency Planning Committee exercise (LEPC)
- Dayton Hamvention
- ARRL Field Day
- Sidney Fireworks
- Testing for hams licenses
- Relay for Life event
- Ohio QSO Party
- Ohio Parks on the Air contest
- Halloween Witchwatch support
- Parade communications support
- Our Christmas Party

You can become as involved as you wish. If you have the time, there is probably quite a bit going on! You can always find the latest list of events on our website:

<http://www.shelbycountyohares.com/Home/Events>

Meetings & Nets

We have a local net on K8ZUK every Sunday night at 19:00 EST. This is an opportunity to practice working in a net and there is usually announcements and news.

We have our Monthly meetings on the fourth Sunday of every month at 16:00 EST. The meetings are held in the Shelby County EMA building (800 Fair Rd, Sidney, OH 45365).



Shelby County Amateur Radio Emergency Services®

SKYWARN



WHAT IS SKYWARN?

SKYWARN is the National Weather Service network of volunteer citizens, public service and emergency management people working to provide the National Weather Service (NWS) with first-hand weather spotting observations during severe weather events. Amateur Radio Operators comprise the backbone of many spotter networks throughout the United States. In this area of the United States the primary severe weather threat comes from Severe Thunder Storms, Tornadoes and flooding from heavy rains. Amateur Radio Operators, or "Hams", participate not only as spotters, but also provide the communications infrastructure to rapidly, reliably and accurately get severe weather reports into the hands of the NWS in order to expedite warnings being issued to the general public. During severe weather, the Shelby County Skywarn nets can be found on 443.200MHz T156.7 +5MHz.

To obtain a spotter's guide, please attend one of the spotter's training classes. A schedule of spotters classes can be found at:

<http://www.weather.gov/iln/spottertrainingschedule>

ARRL



ARRL is the national association for Amateur Radio in the US. Founded in 1914 by Hiram Percy Maxim as The American Radio Relay League, ARRL is a noncommercial organization of radio amateurs. ARRL numbers within its ranks the vast majority of active radio amateurs in the nation and has a proud history of achievement as the standard-bearer in amateur affairs. ARRL's underpinnings as Amateur Radio's witness, partner and forum are defined by five pillars: Public Service, Advocacy, Education, Technology, and Membership.

The ARRL website is an excellent resource to dive deeper into the hobby. It also features lots and lots of great books that can help you learn more about your new interest.

Website: www.arrl.org



Shelby County Amateur Radio Emergency Services®

What now?

You have your Technician ticket (license). Now what?

Wait. You need to wait until you get your callsign. Without it you can't legally transmit. Within a couple days of passing your technician test, the FCC will issue your call sign. You can absolutely get a radio and start listening though!

While you're waiting start looking at the different activities that are available to your class of license. The technicians usually use these frequencies:

10 Meters: 28.000-28.300 MHz: CW, RTTY/Data,
28.300-28.500 MHz: CW, Phone--Maximum power 200 watts PEP
6 Meters: 50.0-50.1 MHz: CW Only
50.1-54.0 MHz: CW, Phone, Image, MCW, RTTY/Data
2 Meters: 144.0-144.1 MHz: CW Only
144.1-148.0 MHz: CW, Phone, Image, MCW, RTTY/Data
70 cm: 420.0-450.0 MHz: CW, Phone, Image, MCW, RTTY/Data

Your new privileges don't have to be used for just Phone(voice). It can be used for SSTV, FSTV, APRS, RTTY/Data, and CW. Google these terms. Each one can be interesting and as in-depth as you are willing to put the time into it. Lots of these skills can also be used in the HF frequencies when you get your General license.

Most technicians start with a radio that operates 2m/70cm (commonly called "dual band") or just 2m band. Both of these are line of sight frequencies. Meaning, they can go barely beyond the horizon. Because of that, a lot of clubs/organizations put up repeaters. We have a 2M repeater up in Maplewood that is about 390 feet! Because we don't have many mountains in West Central Ohio, this covers a lot of the surrounding area. It is used every Sunday night for our weekly net, daily for ragchews (long winded talks) and to discuss organization topics.

To connect to one of our repeaters, just connect to: 146.835MHz T156.7 -.60 MHz. Did you just say, "huh?" Let's break it down:

- Tune your 2M radio to frequency: 146.835MHz
- Read the Manual and find out how to set the CTCSS Tone to: 156.7Hz
- The -.60MHz means that the repeater transmits -.60MHz from the receive frequency. So your radio will be transmitting on 146.235MHz. You don't need to set the transmit frequency. That happens automatically. New radios usually know



Shelby County Amateur Radio Emergency Services®

what the transmit frequency/deviation is automatically. Just verify it has a “-” sign.

- The last step is telling your radio that it must transmit the 156.7Hz tone. If you don't have that CTCSS tone in your transmission the repeater will not repeat your transmission. For most radios change the SQL (Squelch) to include the CTCSS tone. Example “TSQL” on most radios.

Key up (press PTT) your radio and say your callsign clearly, 2 inches from your microphone. If you set everything up correctly and are in range of the repeater, you will get back an end of transmission beep or the repeater will say its callsign (K8ZUK).

Some common mistakes/suggestions for new ham/repeater users:

- Ker-chunking: This is when you key up the mic, but don't say anything. If you are testing, just say it. Ex: “(your callsign), testing radio.”
- A lot of times when you are calling out to talk to someone, you add the radio style you are using. “*callsign*, mobile” Common ones: Mobile, HT(Hand Talkie) or base.
- If there is a conversation going on and you would like to join, just say your callsign during a pause.
- Leave a pause between transmissions. 1-2 seconds is usually enough. That way if someone wants to join they can.
- Signal reports (QRK) are two numbers. The first number is the clarity of the transmission on a scale of 1 to 5. The second number is the strength of the signal on a scale of 1 to 10. When using the repeater the first number is the important number. Ex, “Your signal is a 39” A 39 would be mostly clear voice surrounded by a fair amount of static while peaking out your receive power meter on your radio.
- It is against the law to use offensive language. Don't do it.
- Use the word “mayday” in emergencies only. If you hear “mayday”, stop all transmissions and listen for their emergency transmission.
- If you are looking to speak with someone specifically say, “*YourCallSign to TheirCallSign*”
- End a conversation with “clear” to let everyone know you are done with the conversation and the frequency is open.



Shelby County Amateur Radio Emergency Services®

Elmer

An Elmer in the ham world, is someone who holds experience and knowledge about the hobby. They may have a broad range of experience or specialize in one discipline. We are willing to lend a hand to new hams, but we are here to offer a tidbit of advice, not a 3hr class. Do your research. There are lots of resources on the internet, over lots of topics. Read your radio manual. It's terrible, but a necessary evil. With a little time and energy you will be surprised how quickly it is before you are an Elmer for someone else!

Repeaters

We currently have two repeaters that we own and maintain. They are both Yaesu DR-1X repeaters.

Callsign	Frequency	CTCSS	Offset	Technology	Location
K8ZUK	146.835	156.7	-.60MHz	FM & Digital	Maplewood, OH
KE8BCY	443.200	156.7	+5MHz	FM & Digital	Sidney, OH

During Skywarn events the K8ZUK repeater becomes tied to the Dayton Skywarn net and the KE8BCY becomes our local Skywarn Net. You can tell which mode they are in by the Morse code received after you transmit.

K8ZUK			KE8BCY		
Normal	--	dah, dah	Normal	...	dit, dit, dit
Skywarn	..	dit, dit	Skywarn	..	dit, dit
Net	-.	dah, dit	Net	-.	dah, dit

Final

We look forward to hearing you on the bands.

73, (callsign), clear.